

ALT W72 CW / ALT W73 CW

Casement windows installation instructions



2024

www.alutech-group.com

Contents

General information	2
1. Safety precautions	2
2. Requirements for the openings	2
3. Rules of installation and fixation of the window frame	3
4. Window installation	3
5. Adjustment, testing and inspection of the product	4
6. Delivery of the installed product	4
Information pictograms.	5
Standard design drawing	5
System installation	6

GENERAL INFORMATION

Correct mounting of the design is a prerequisite for ensuring high consumer properties of the product.

The Instructions contain recommended order and description of the typical installation process of ALT W72 CW and ALT W73 CW windows.

All existing rules and regulations that apply to the installation of windows must be strictly observed.

The contents of these Instructions cannot be used as a basis for legal claims. ALUTECH Company reserves the right to introduce changes and amendments to the window design and these Instructions.

1. SAFETY PRECAUTIONS

- Read thoroughly the mounting instructions before starting;
- Do not work alone. Two or more people are required. Use safe methods of lifting large and heavy objects;
- Be careful when handling glass. Broken or cracked glass can cause serious injuries;
- Use protective equipment (e.g. goggles, gloves, ear protection, etc.);
- Use safe manual/electric tools and follow the instructions for use;
- Be careful when carrying out installation work at height. Follow the occupational health and safety instructions.

Mounting of windows should only be carried out by qualified specialists who are familiar with the construction of the design and the technological process, who have received training and instructions and have been tested on occupational health and safety. When performing installation work, the applicable technical regulations of the region of installation regarding occupational safety must be strictly followed.

2. REQUIREMENTS FOR THE OPENINGS

- the opening framing plane surfaces must be in one plane and be smooth and even, without plaster mortar build-up or cracks.
- the space required for installation must be free from construction materials, heating and ventilation pipes, etc.

Openings for the installation of window units must comply with the requirements of the technical regulations of the region of installation and/or the design documentation.

3. RULES OF INSTALLATION AND FIXATION OF THE WINDOW FRAME

- conduct pre-installation inspection of the window units (see table “Controlled parameters of the finished product”);
- the frame must be positioned symmetrically relative to the vertical axis of the opening;
- when installing the window frame, its components must be levelled in vertical and horizontal planes;
- the frame must be securely fastened and not pose a potential danger to human life and health.

Controlled parameters of the finished product		
Name	Nominal dimension ranges, mm	Maximum tolerance, mm
Inner dimensions of the frame	>1000	+1.0
Outer dimensions of the frame	>1000	-1.0
Straightness tolerance, mm (length and width)	At a length of 1 m of any section of the frame element	1.0
Flatness tolerance, mm (length and width)	At a length of 1 m of any section of the frame element	1.0
	Along the entire length	3.0
	On the outer surfaces of adjacent elements	0.3
Diagonal length difference	≤1000	1.0
	1000–2000	2.0
	>2000	3.0

The selection of fasteners depends on the material characteristics of the opening.

The screws shall be made of steel with anti-corrosion coating of at least 9 µm thickness. The strength grade of the screws shall be at least 5.6.

All fasteners must be corrosion resistant.

Construction products and materials used for completion of window openings shall comply with the requirements of the applicable regulatory documents of the region of installation; have manufacturer’s documents of quality and, in accordance with the current legislation, certificates of conformity. Replacement of products and materials stipulated in the design documentation shall be carried out in accordance with the established procedure.

4. WINDOW INSTALLATION

Before installing, visually inspect the product for the following:

- correctness of the ordered product (dimensions, opening scheme, colour, hardware, glazing, etc.);
- the integrity of the construction elements and the availability of the complete package.
- absence of open corner joints, cracks, missing sections and/or other damage.
- The opening must be fully prepared before the installation of the design.

Ensure proper waterproofing, vapour barrier and effective insulation of the mounting joint in accordance with the design documentation. If construction work is carried out in the premises during installation, the design must be protected against splashes of mortar, cement, gypsum, corrosive and caustic substances (acids and alkalis), paint materials, etc.

GENERAL INFORMATION

5. ADJUSTMENT, TESTING AND INSPECTION OF THE PRODUCT

Remove the protective film from the inner and outer side of the design within 2 months of installation. Clean soiled areas. Washing shall be carried out with clean water or non-corrosive cleaning solutions using a sponge or soft rag.

Do not use abrasive cleansers or products containing alcohols.

Check the functionality of the sash by opening and closing it three times. The hardware mechanisms must operate without jamming.

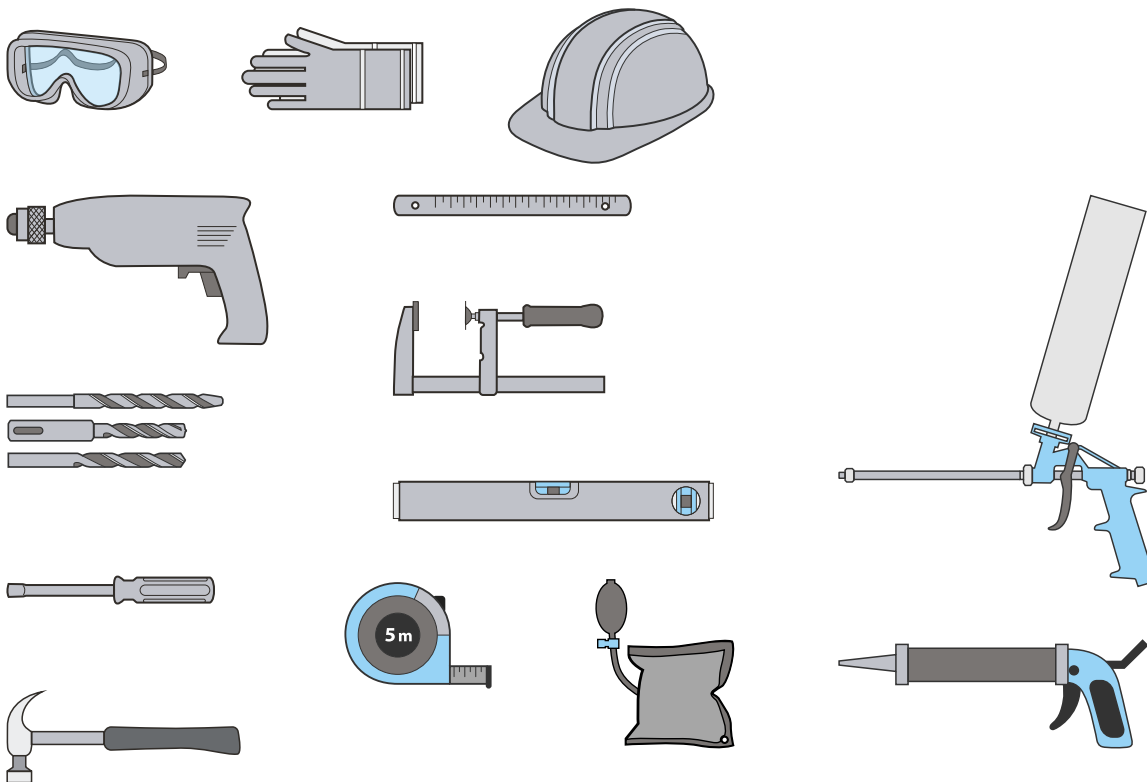
For windows with an electric motor, additionally check the operation of the automation in all programmed modes.

6. DELIVERY OF THE INSTALLED PRODUCT

Delivery of the installed product to the Customer shall be carried out in accordance with the technical regulations of the region of installation and in the following order:

- a representative of the Company that installed the product shall demonstrate full functional performance of the window;
- the operating documentation shall be filled in.

Protective equipment and tools for installation



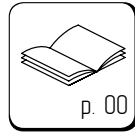
Information pictograms



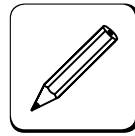
Attention



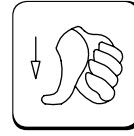
Technical information



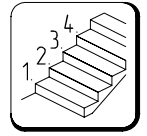
See page



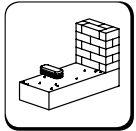
Mark out



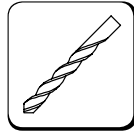
Push on



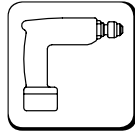
Step-by-step



Clean the opening

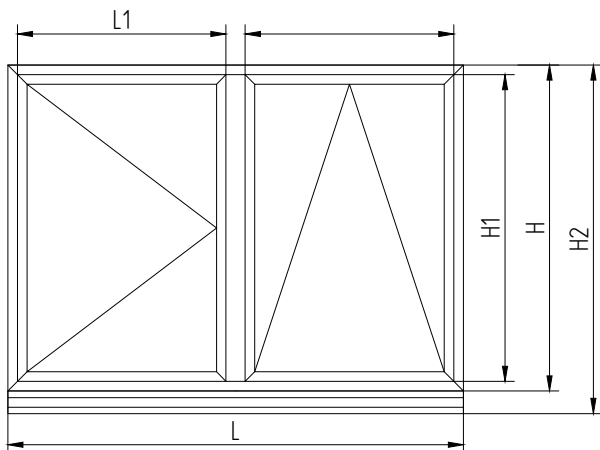


Drill



Screw in

Standard design drawing

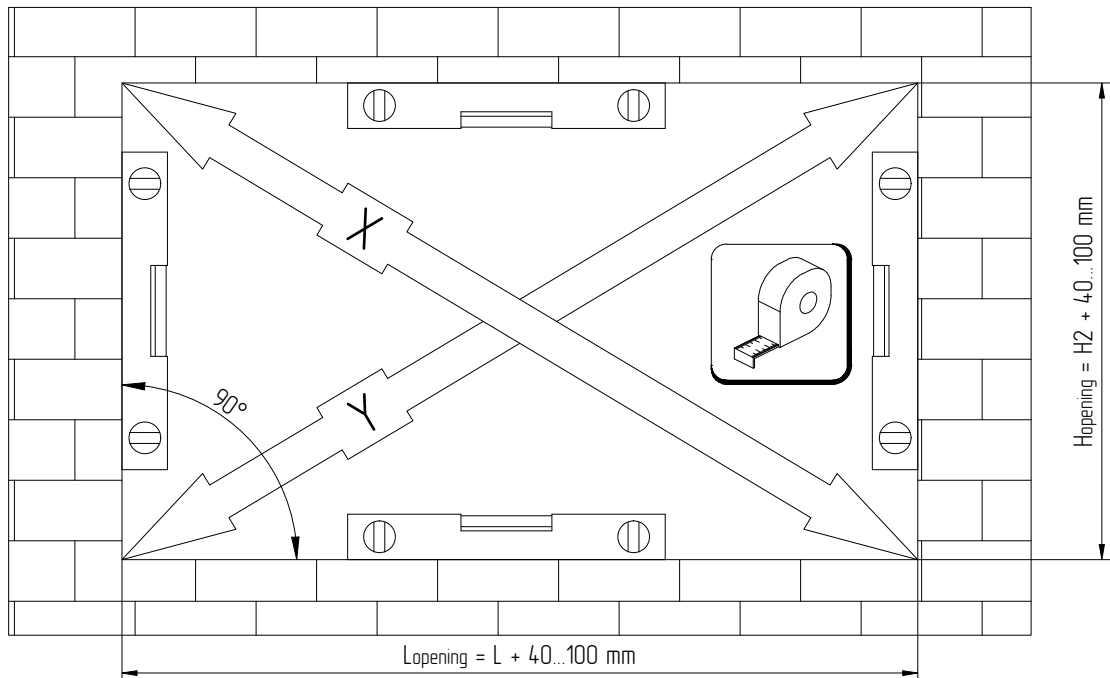
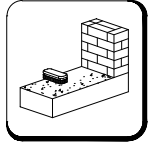


H – frame height;
H1 – sash height;
H2 – height of the design with
the finishing profile;
L – window width;
L1 – sash width.

ALT W72 CW / W73 CW System installation

1

Check the dimensions of the opening for compliance with the design documentation and/or the technical regulations of the region of installation

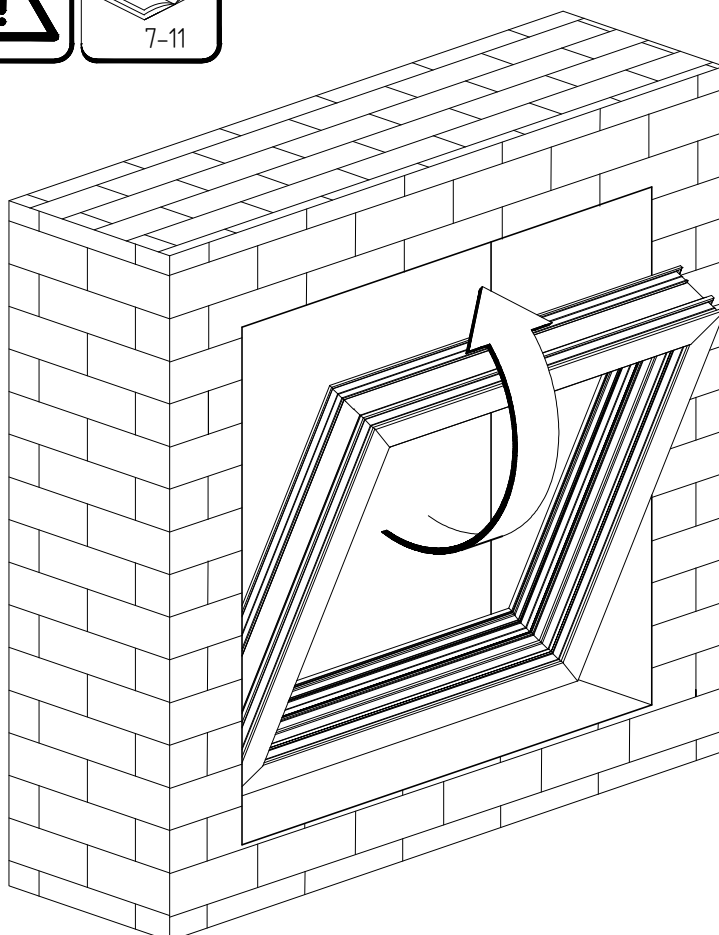


2

Prepare the opening before frame installation according to the design documentation and/or the technical regulations of the region of installation



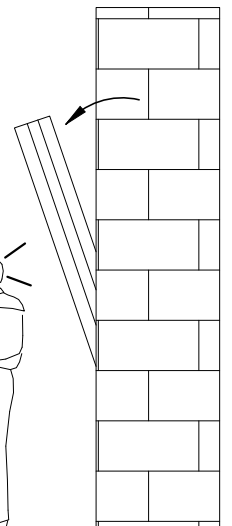
Install mounting plates in advance



Prepare frames for mounting in the opening:
- remove glass units from the fixed windows.
When removing elements from fixed windows, it is recommended to mark glass beads and glass units.



Do not leave the design without secure fixation



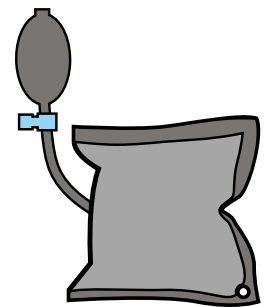
ALT W72 CW / W73 CW System installation

3

Align the window frame horizontally and vertically using a level



For convenient adjustment of the window/door in the opening you may use mounting pads

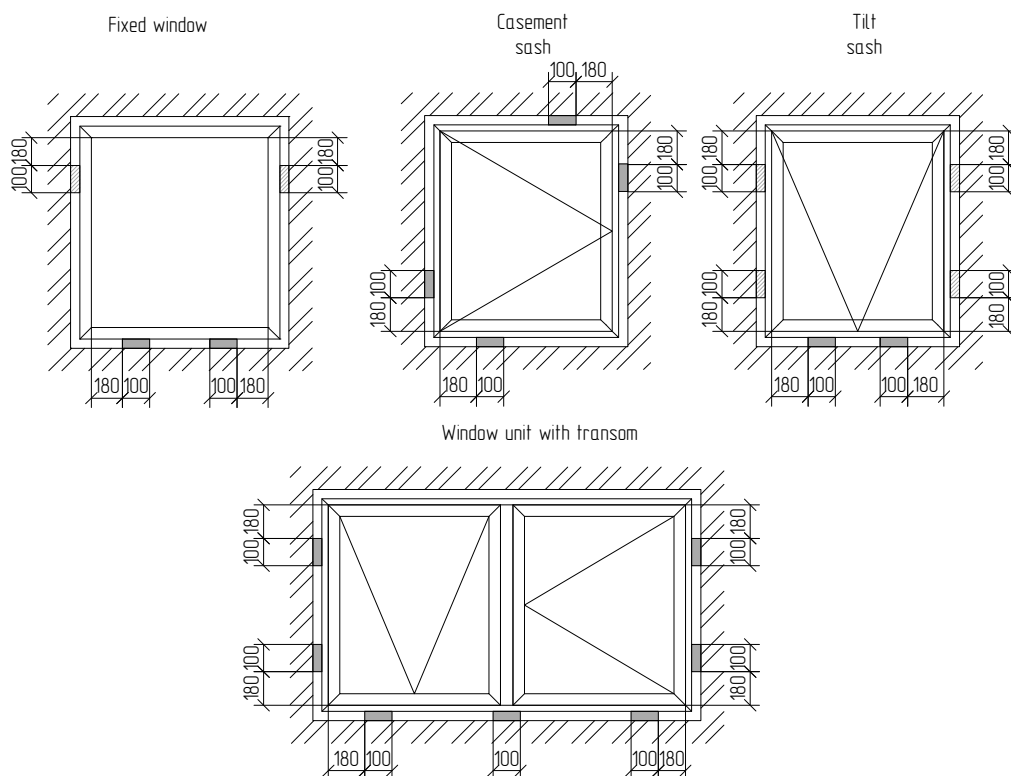


The windows are installed in the opening on bearing supports.
Use spacer pads and a level to check the horizontal and vertical alignment of each window.
Bearing supports and spacer pads must be installed in such a way that they do not cause deformation of the windows.
Do not install bearing supports and spacer pads at the attachment points.
Material: treated wood, plastic, parinite.



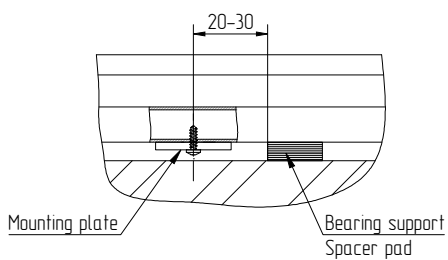
Do not remove bearing supports after installing and fixing the window!

Layout diagrams of supports and spacer pads



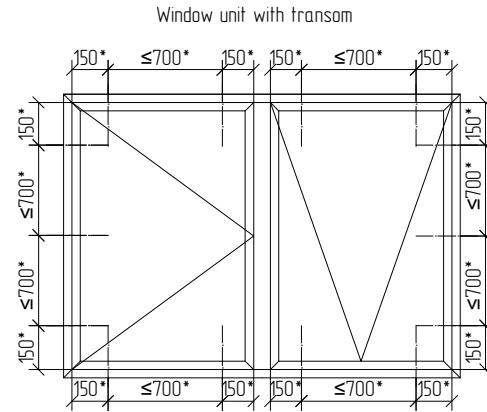
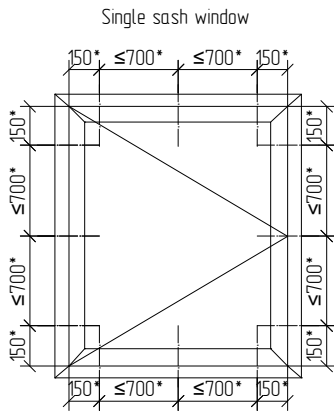
Layout diagram of the bearing support/spacer pad relative to the fastening element

- bearing support;
- spacer pad.



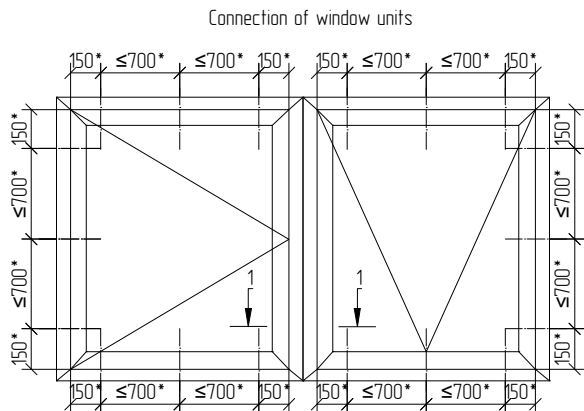
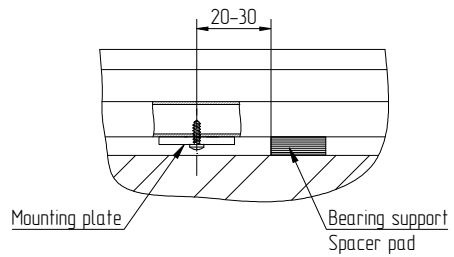
Do not remove bearing supports after installing and fixing the window!
Install additional spacer pads next to each fastening element!

Layouts of fastening points

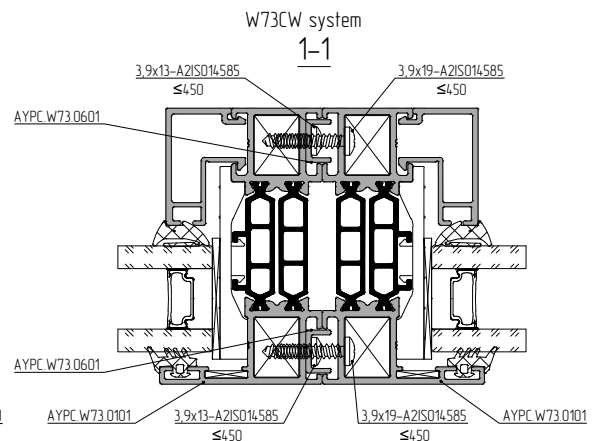
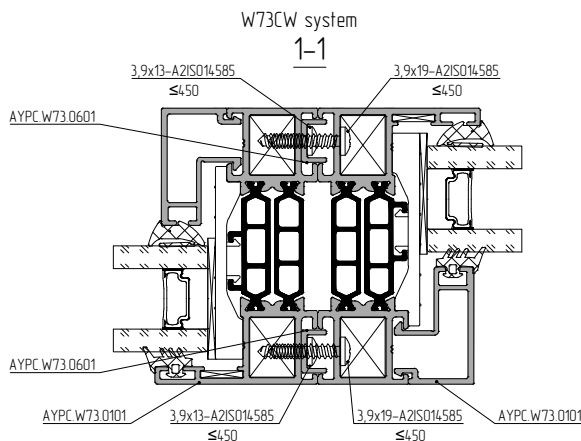
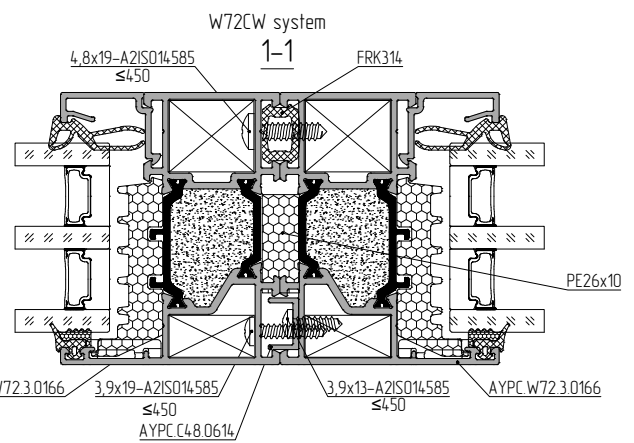
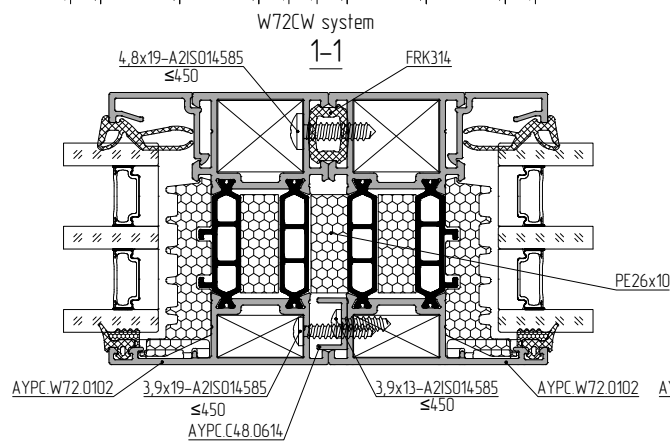


*Distance from the corner and between fastening elements should be in accordance with the technical regulations of the region of installation or the design documentation!

Layout diagram of the bearing support/ spacer pad relative to the fastening element



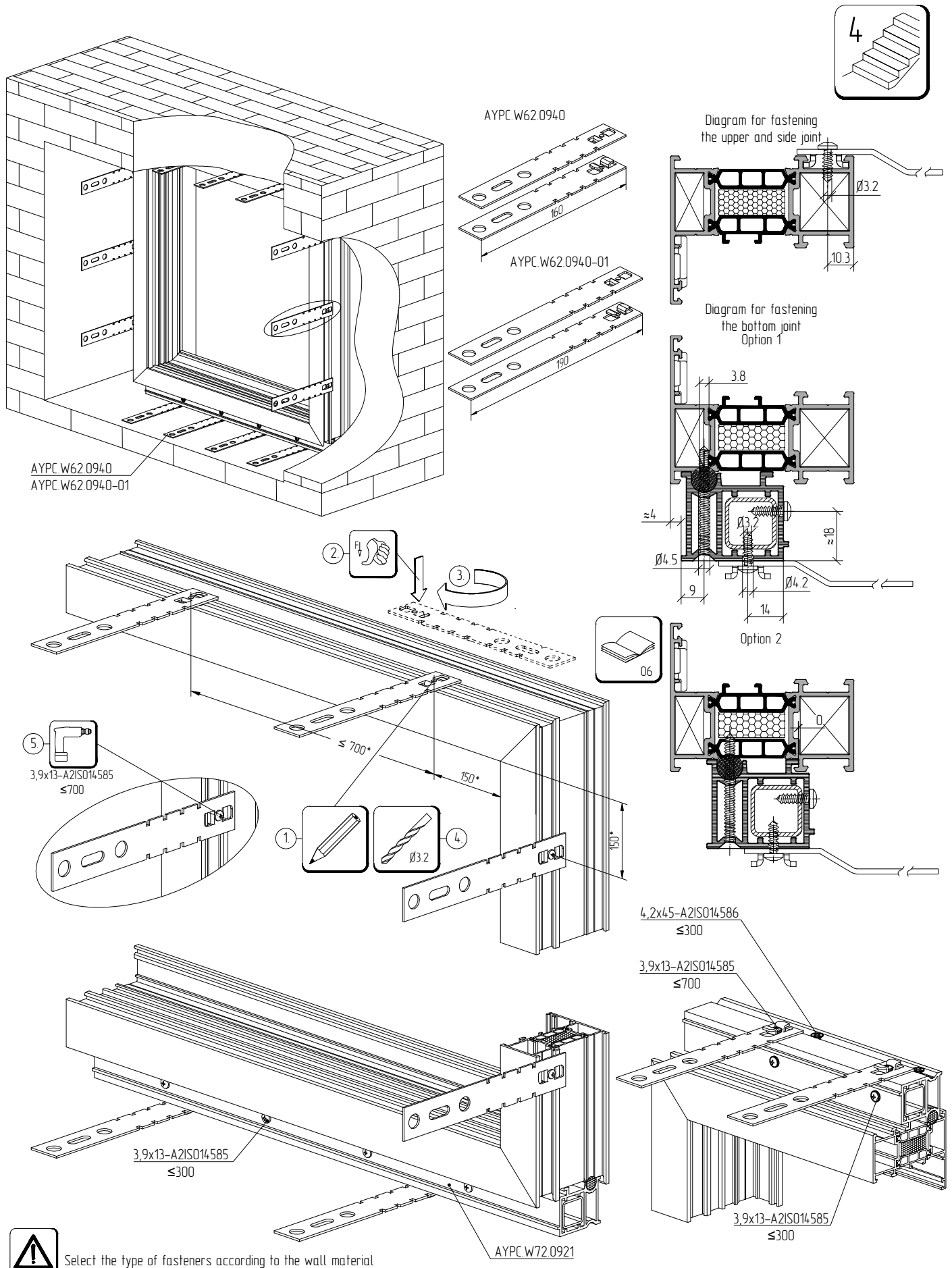
ALT W72CW ALT W73CW



The type of fasteners and the depth of setting depends on the wall material. Selection is carried out in accordance with the technical regulations of the region of installation or the design documentation!

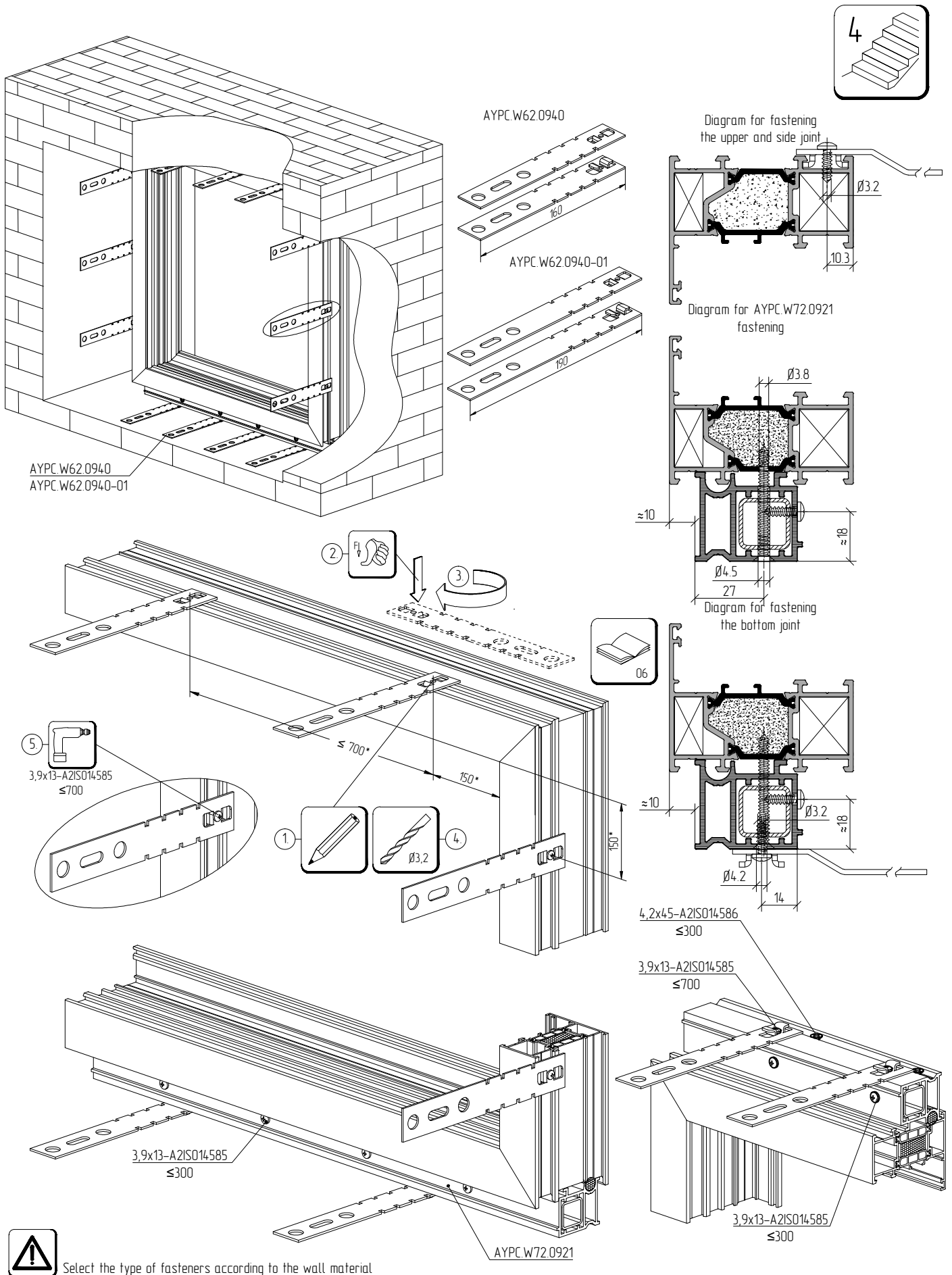
ALT W72 CW / W73 CW System installation

Installation of the window unit with the use of mounting plates for W72CW



ALT W72 CW / W73 CW System installation

Installation of the window unit with the use of mounting plates for W72CW



ALT W72 CW / W73 CW System installation

Installation of the window unit with the use of mounting plates for W73CW

4

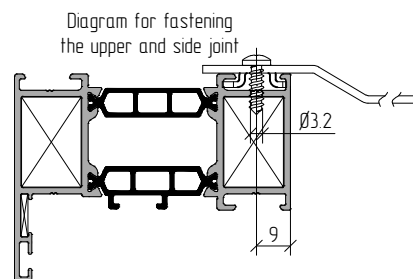
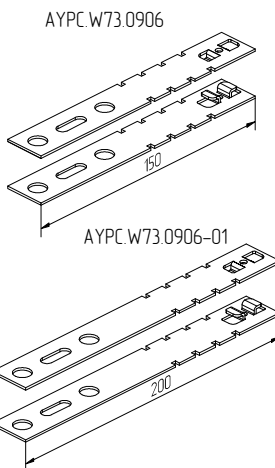
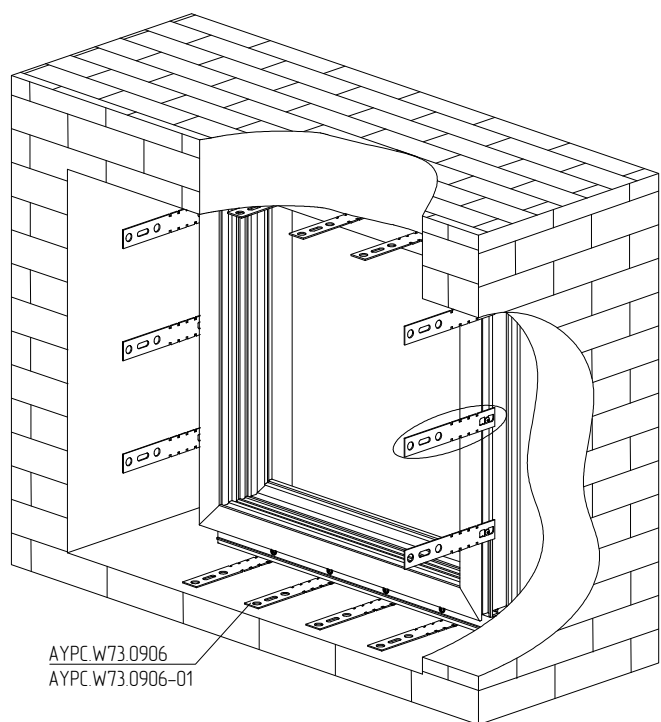


Diagram for AYPC.W72.0921 fastening

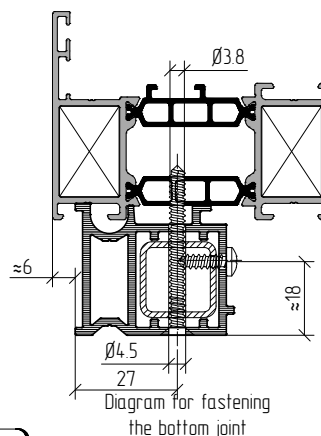
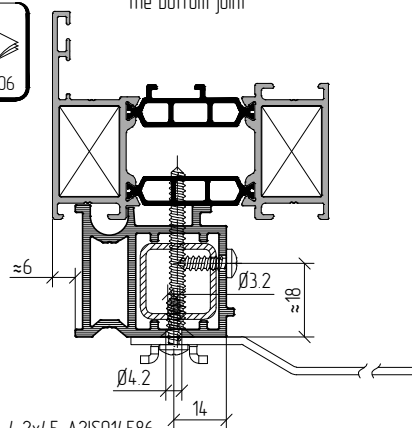
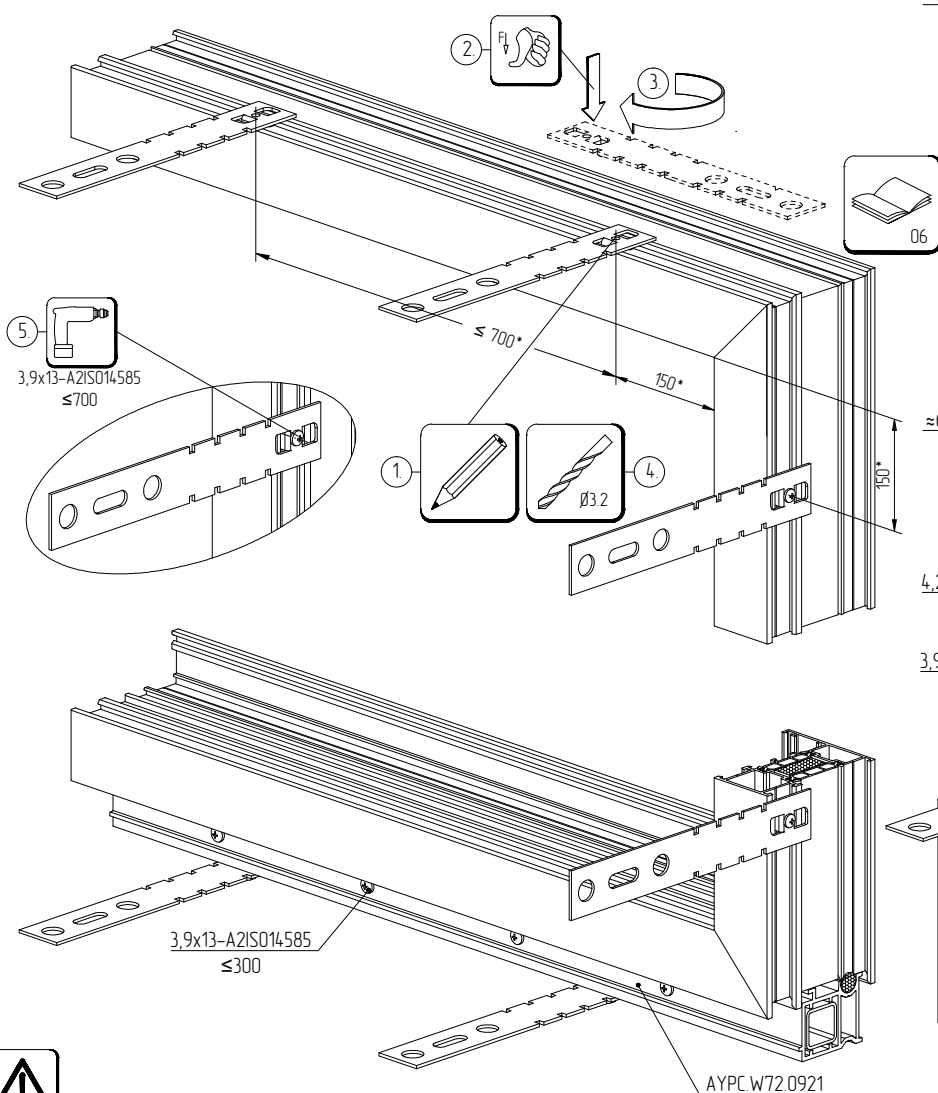
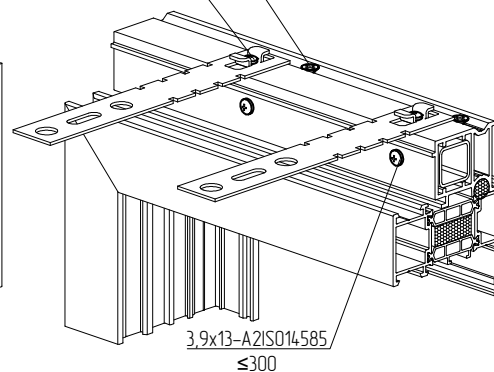


Diagram for fastening the bottom joint



4,2x45-A2ISO14586
≤300

3,9x13-A2ISO14585
≤700



3,9x13-A2ISO14585
≤700

3,9x13-A2ISO14585
≤300

AYPC.W72.0921

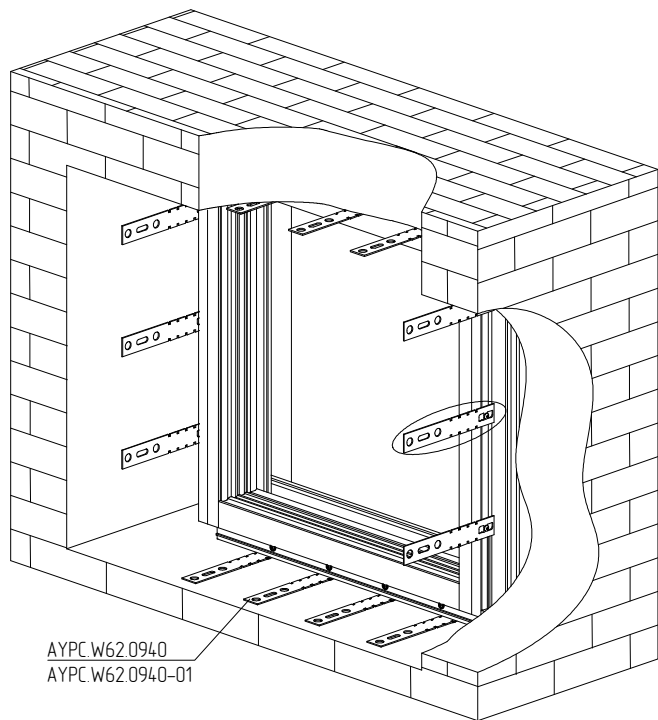


Select the type of fasteners according to the wall material

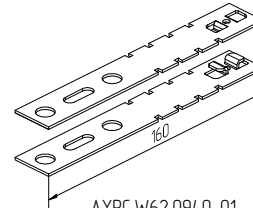
ALT W72 CW / W73 CW System installation

Installation of window unit with W72.3.0821 profile with the use of mounting plates for W72CW

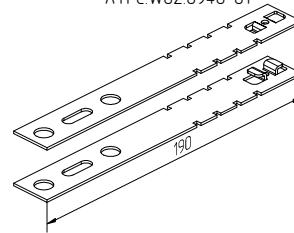
4



AYPC.W62.0940

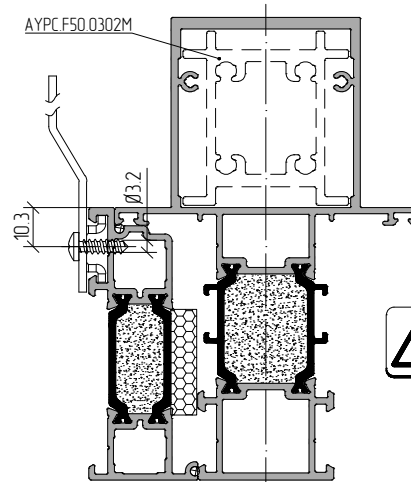


AYPC.W62.0940-01

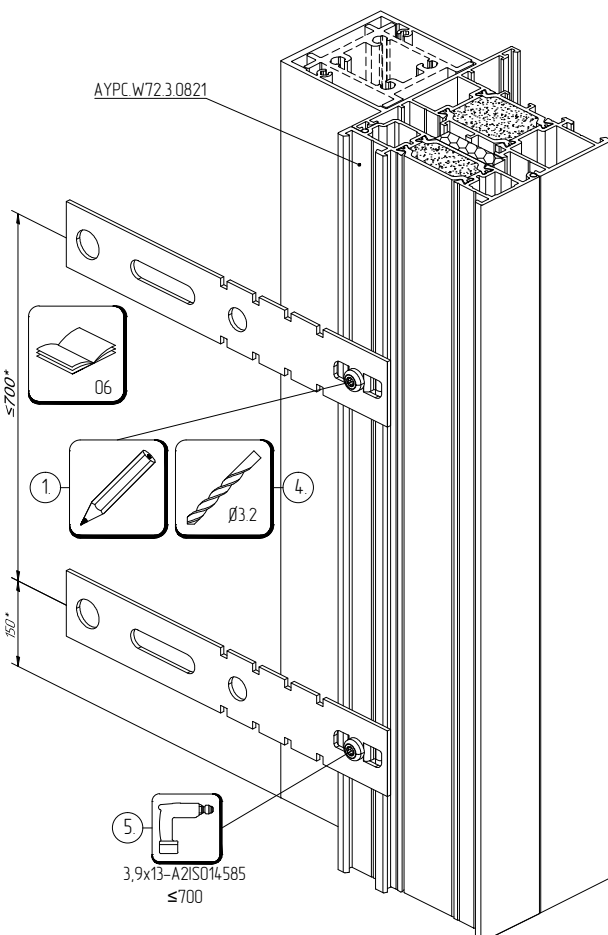


AYPC.W62.0940
AYPC.W62.0940-01

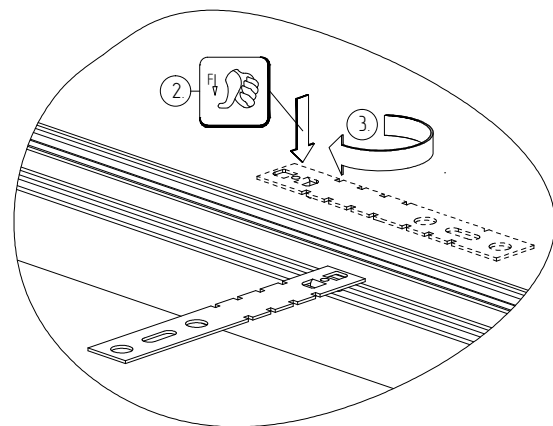
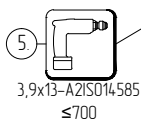
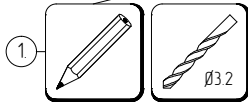
Diagram for fastening
the side joint



ALT W72CW



AYPC.W72.3.0821

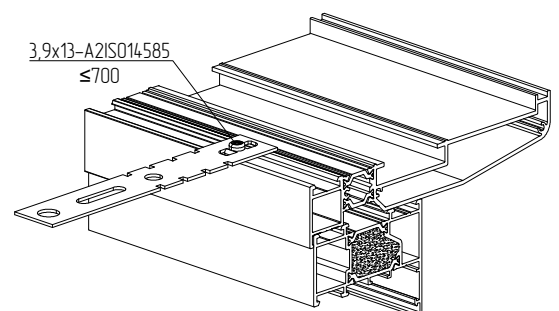
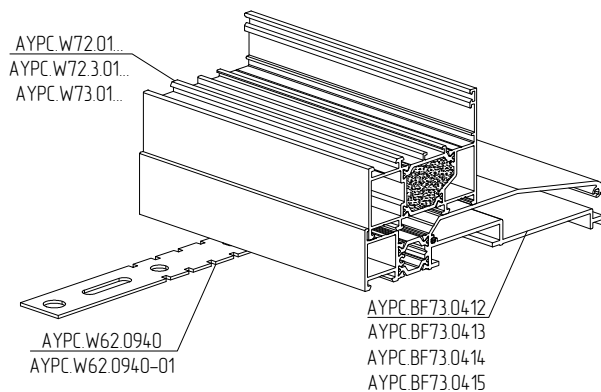
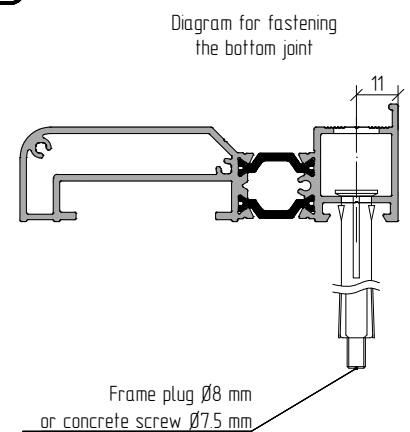
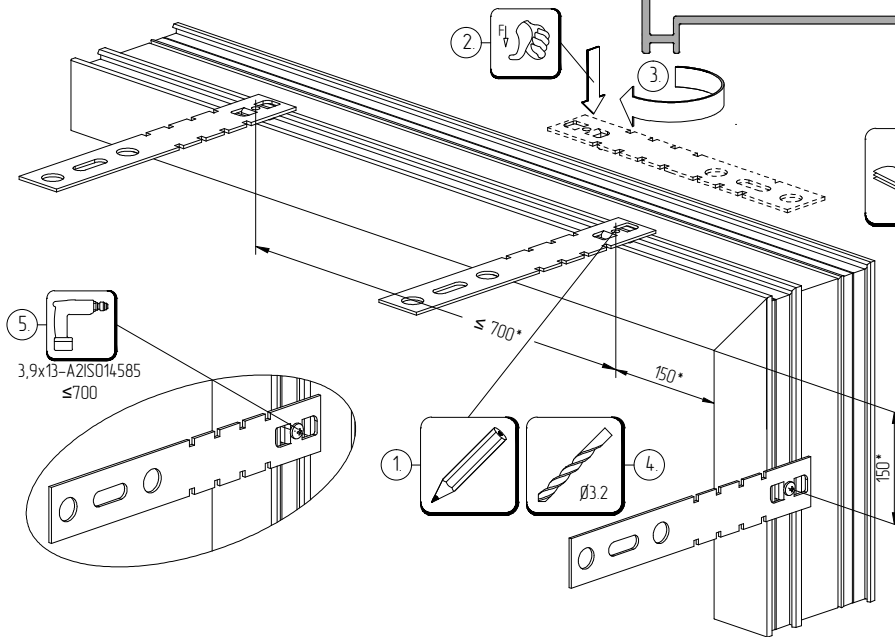
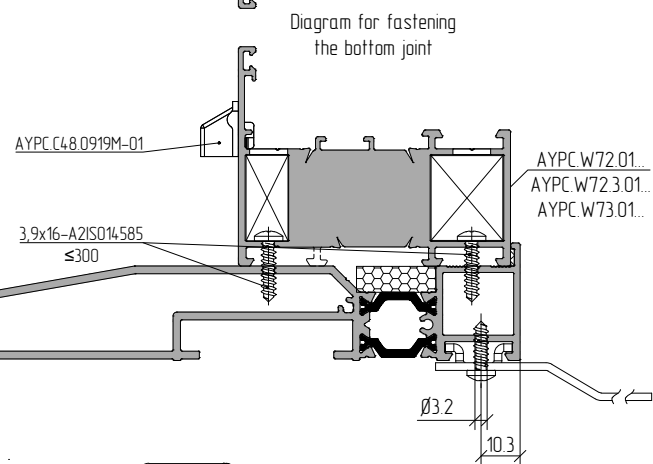
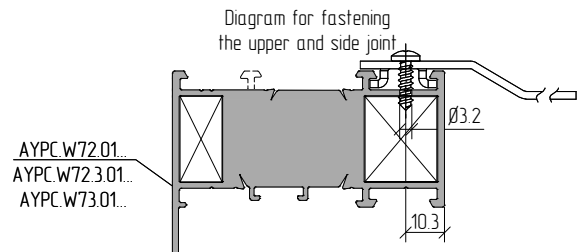
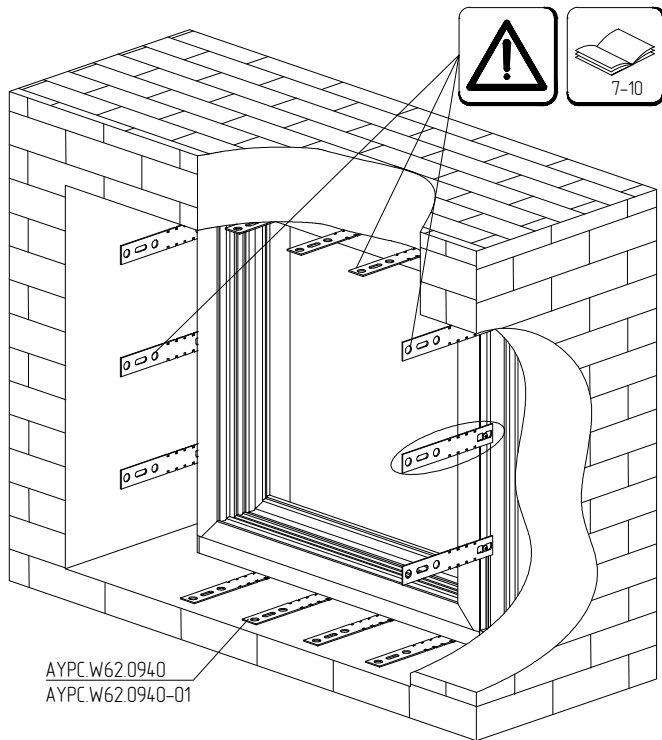


Select the type of fasteners according to the wall material

ALT W72 CW / W73 CW System installation

Installation of the window unit with the drain with the use of mounting plates and frame anchors

4



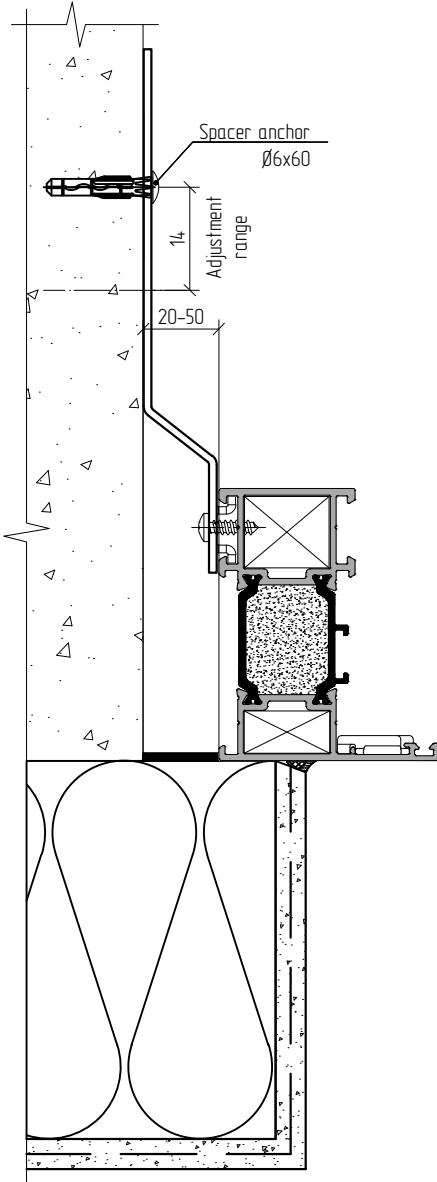
Select the type of fasteners according to the wall material

ALT W72 CW / W73 CW System installation

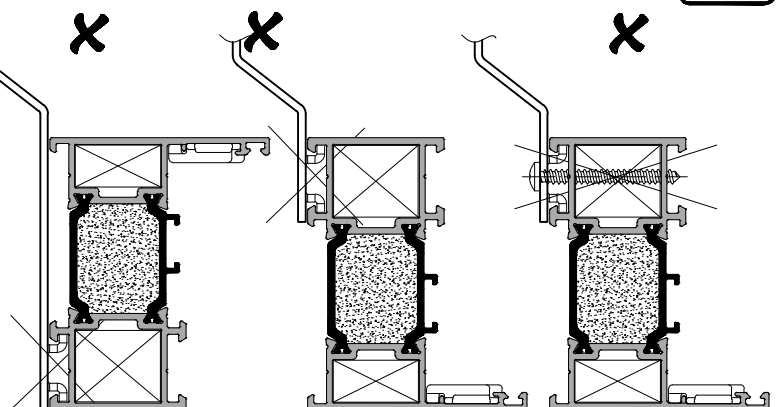
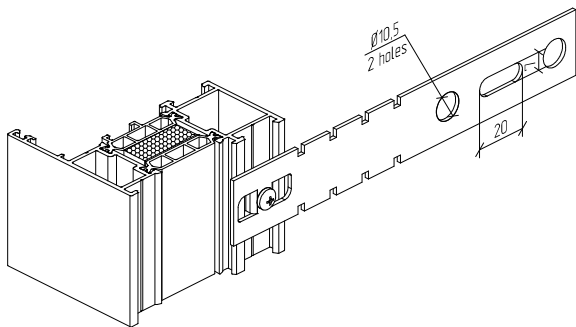
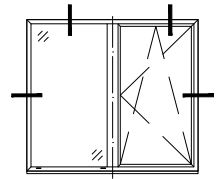
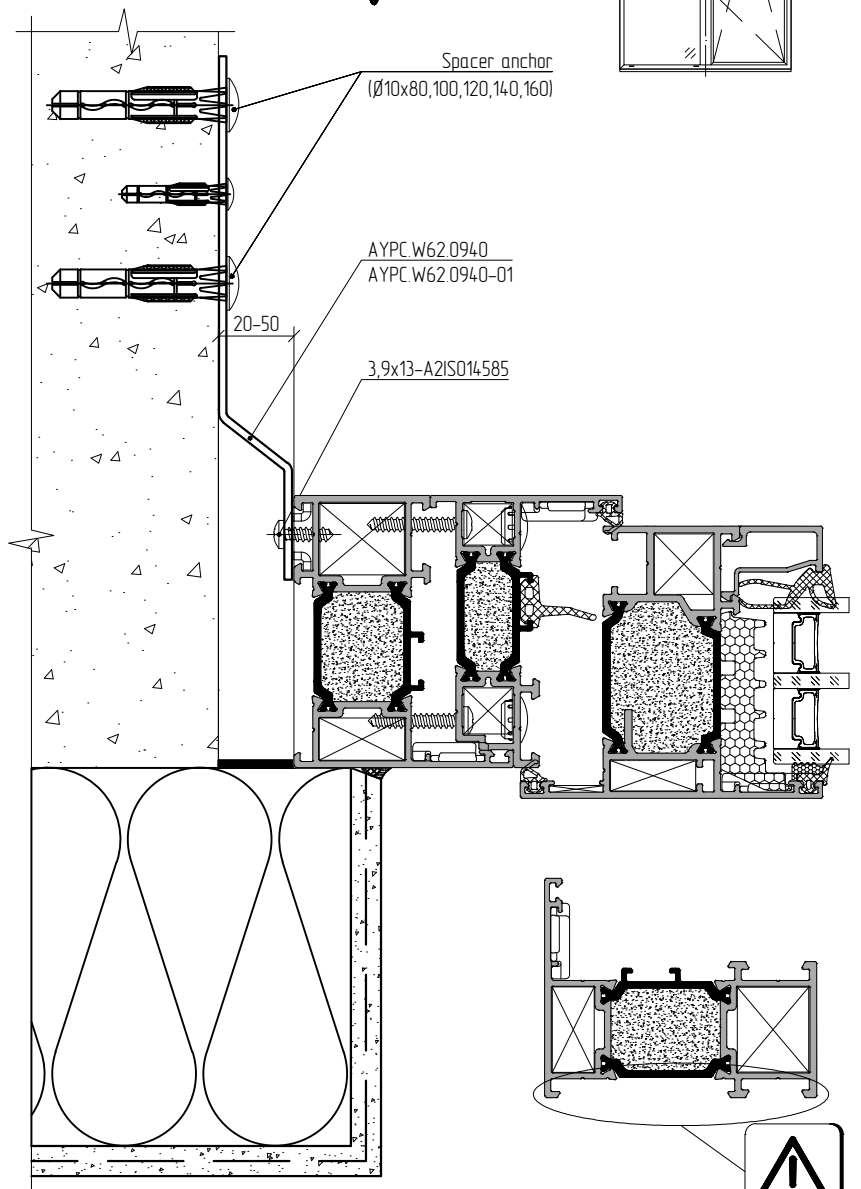
Installation of the window in the opening without a rebate with the use of mounting plates

ALT.W72CW requirements

Preliminary installation and alignment of the frame in the opening



Final anchoring



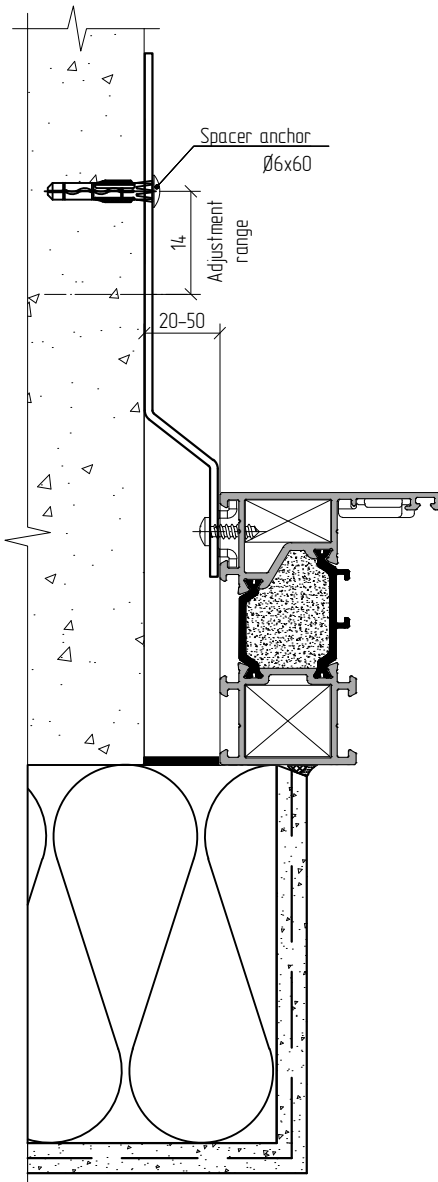
Before installing the frame, please read carefully the instructions on how to arrange the mounting unit in accordance with the design documentation and the technical regulations of the region of installation!

ALT W72 CW / W73 CW System installation

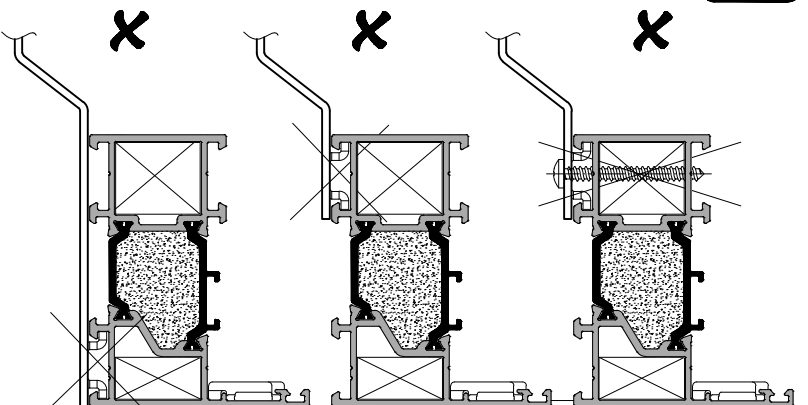
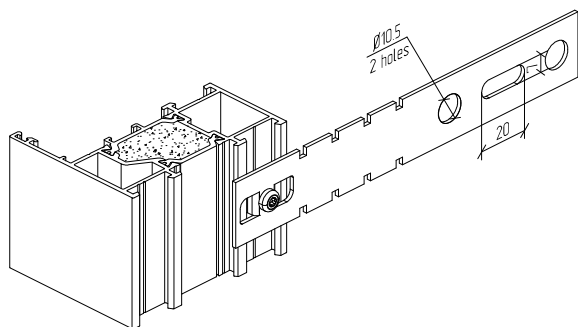
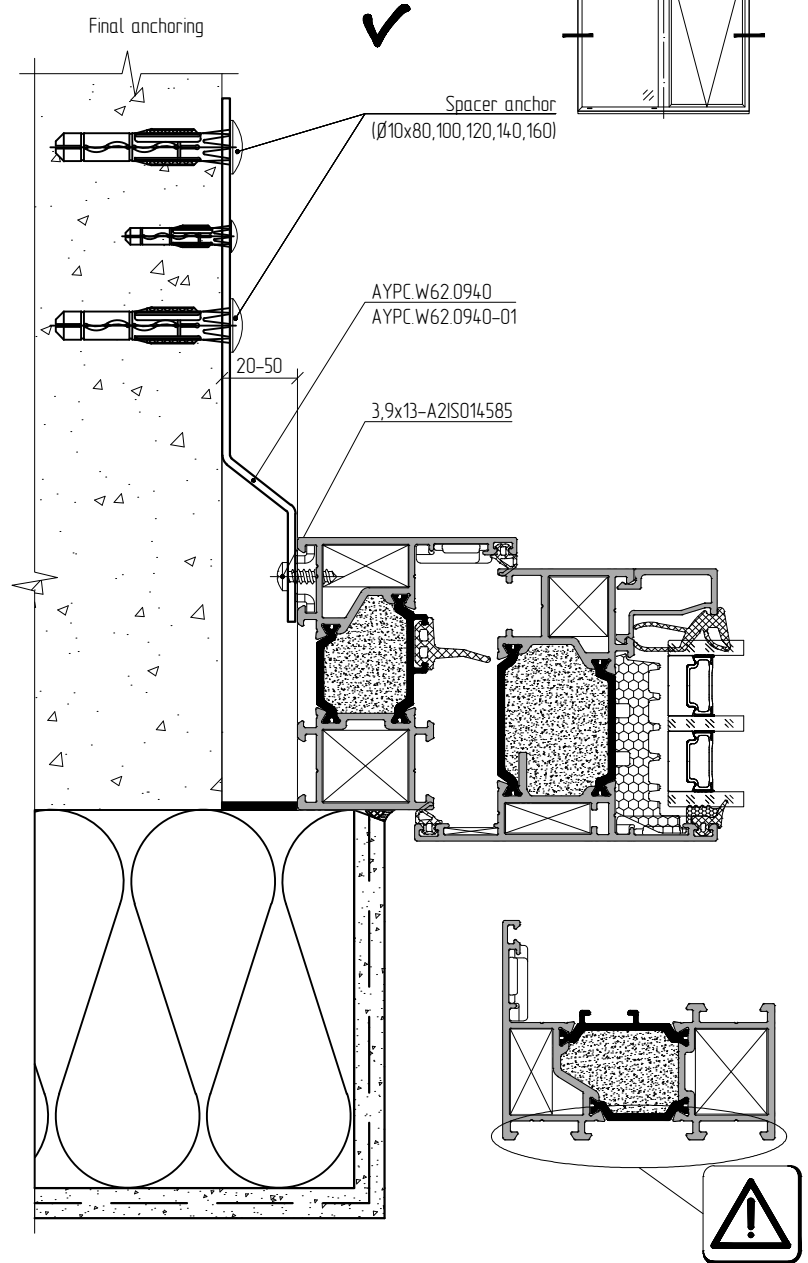
Installation of the window in the opening without a rebate with the use of mounting plates

ALT.W72CW requirements

Preliminary installation and alignment of the frame in the opening



Final anchoring



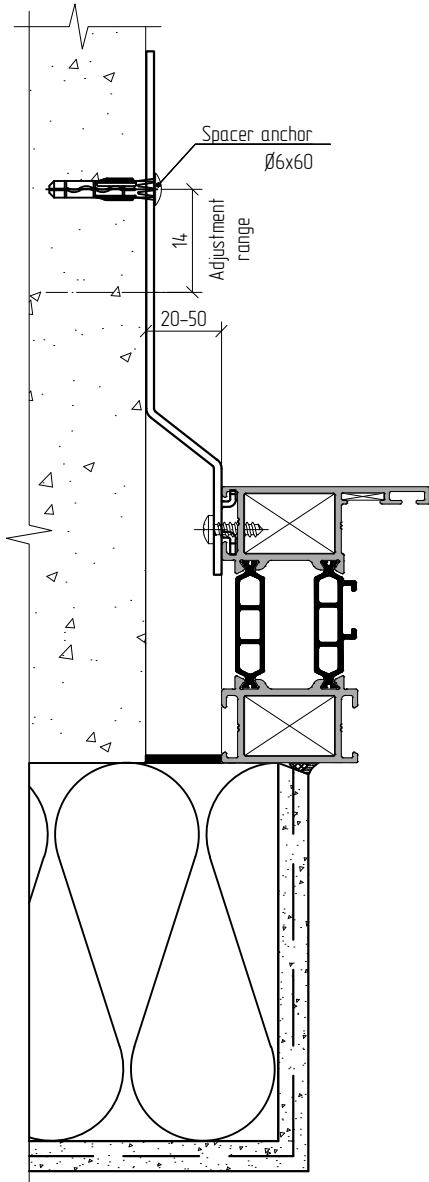
Before installing the frame, please read carefully the instructions on how to arrange the mounting unit in accordance with the design documentation and the technical regulations of the region of installation!

ALT W72 CW / W73 CW System installation

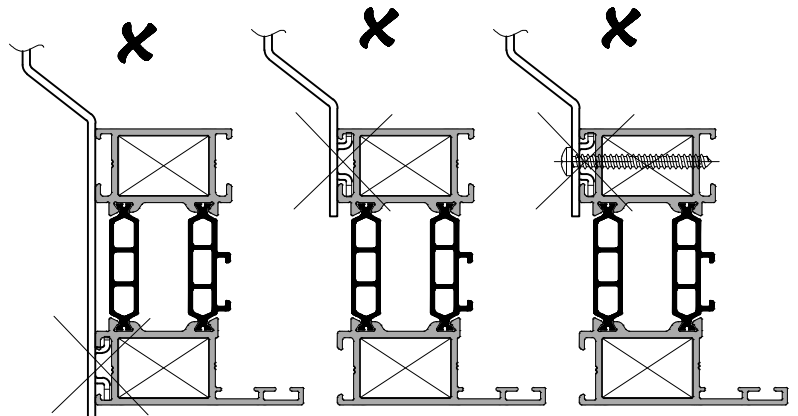
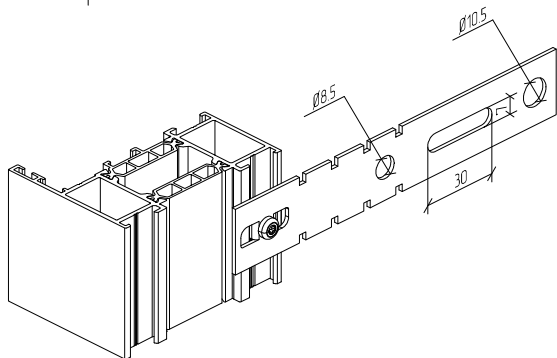
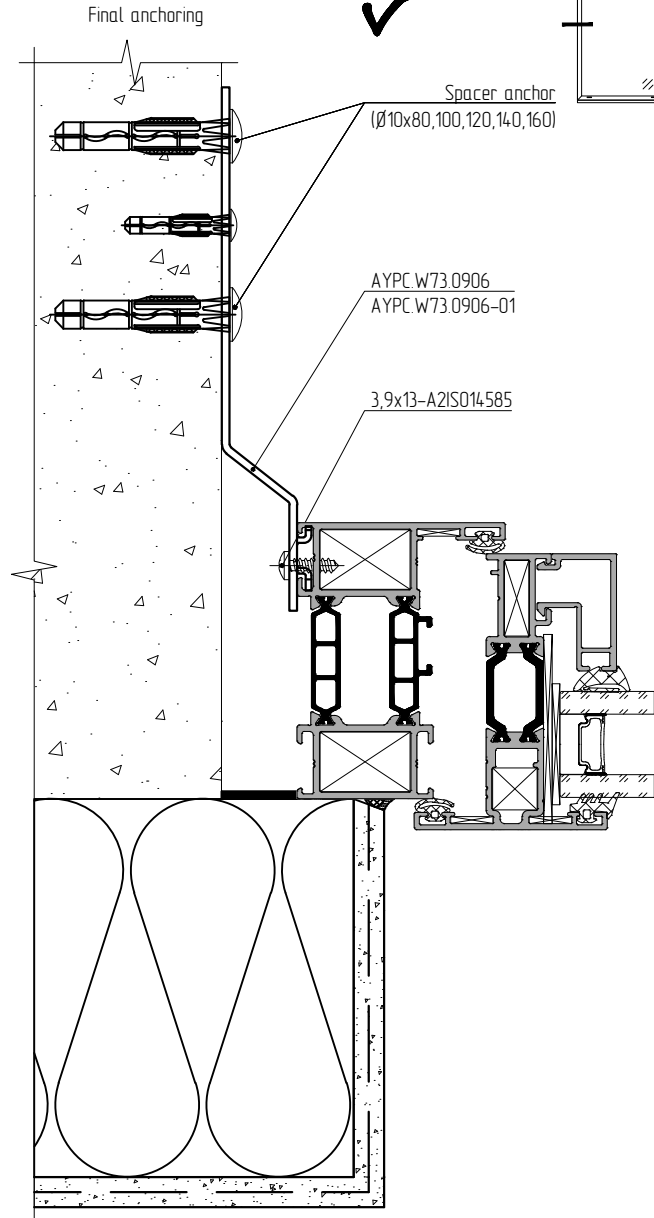
Installation of the window in the opening without a rebate with the use of mounting plates

ALT.W73CW requirements

Preliminary installation and alignment of the frame in the opening



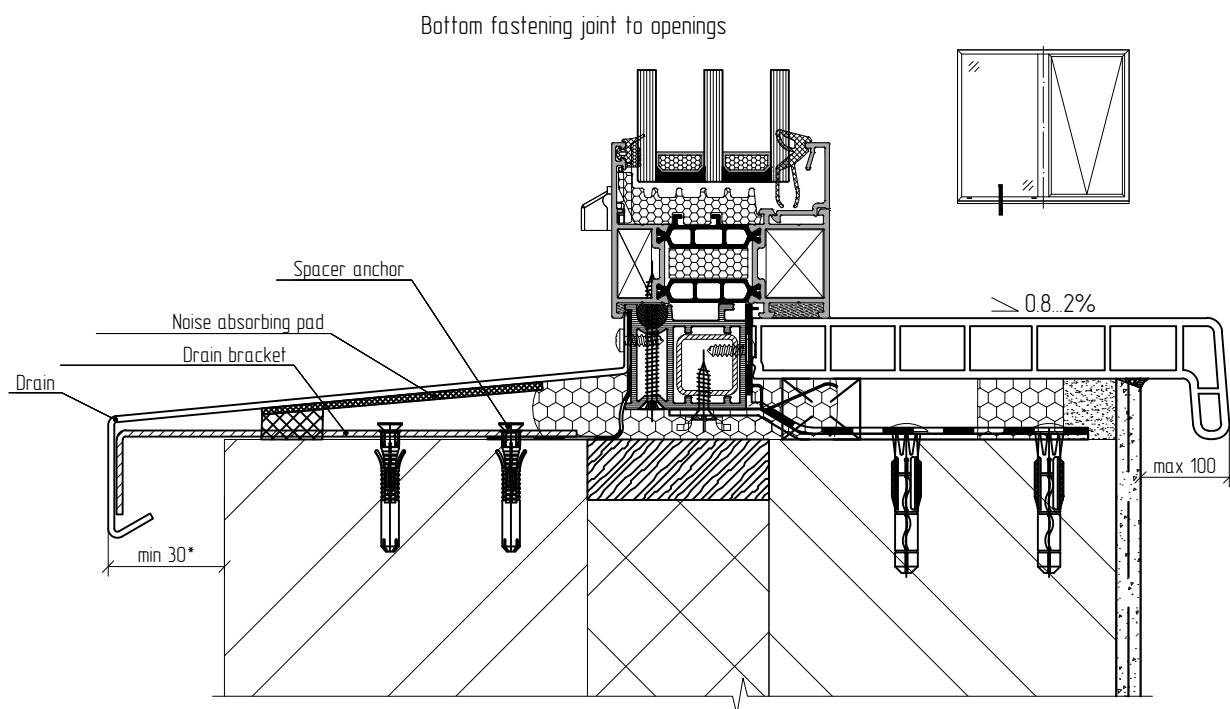
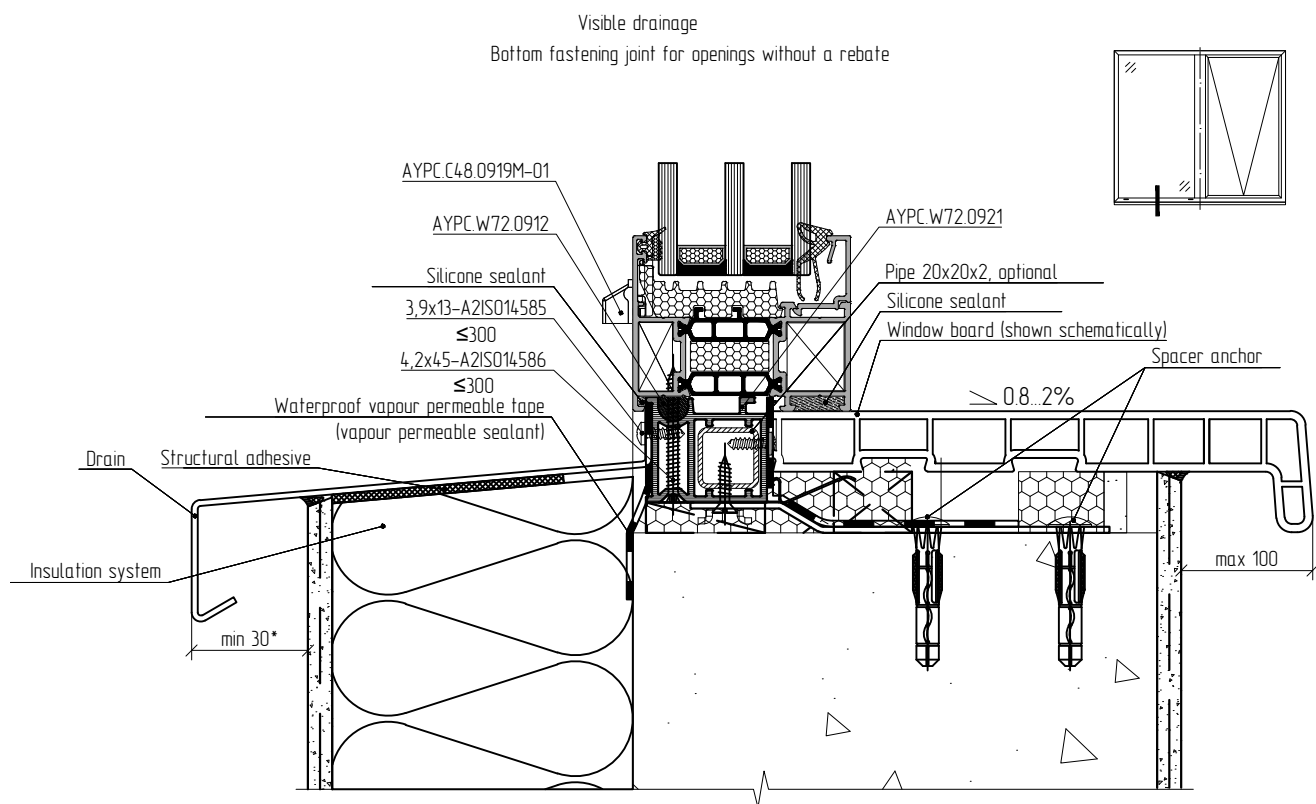
Final anchoring



Before installing the frame, please read carefully the instructions on how to arrange the mounting unit in accordance with the design documentation and the technical regulations of the region of installation!

ALT W72 CW / W73 CW System installation

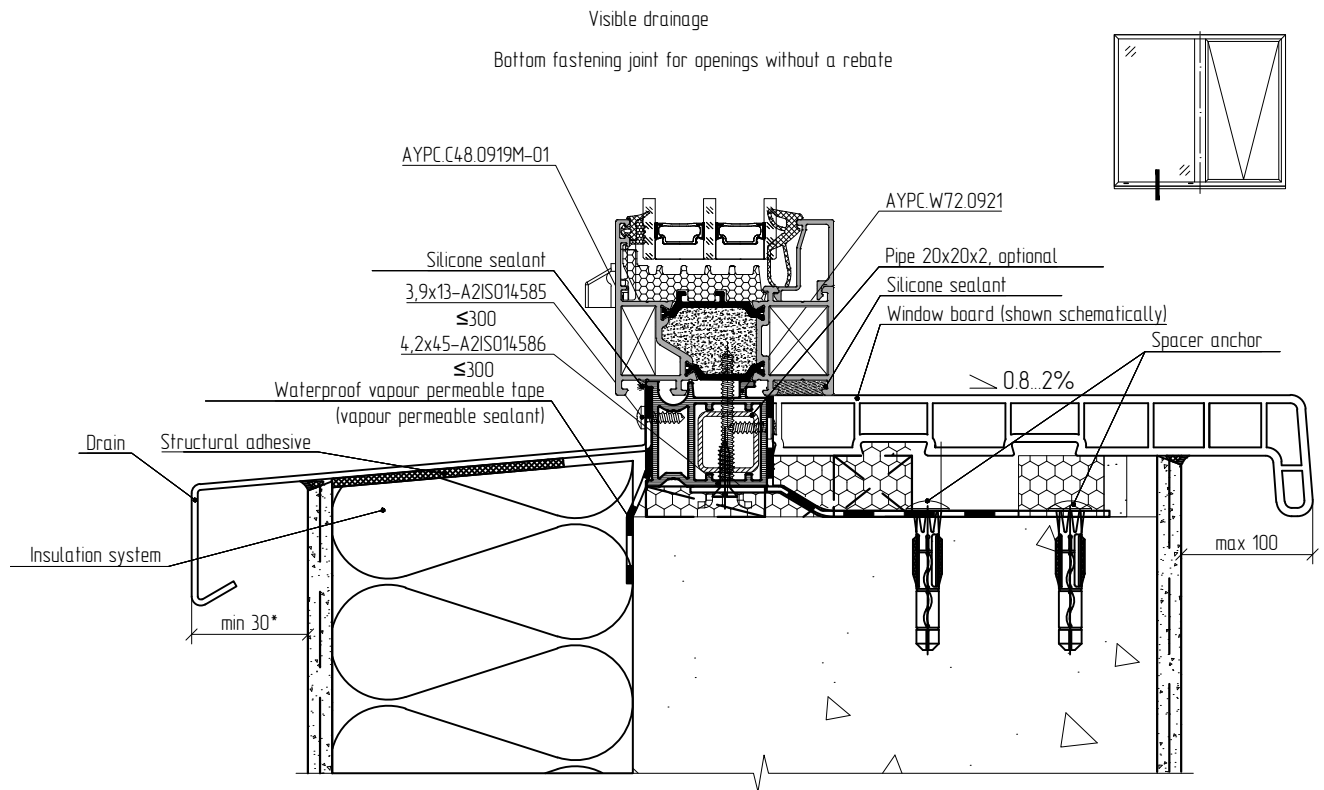
Installation of the window in the opening without a rebate with the use of mounting plates for W72CW



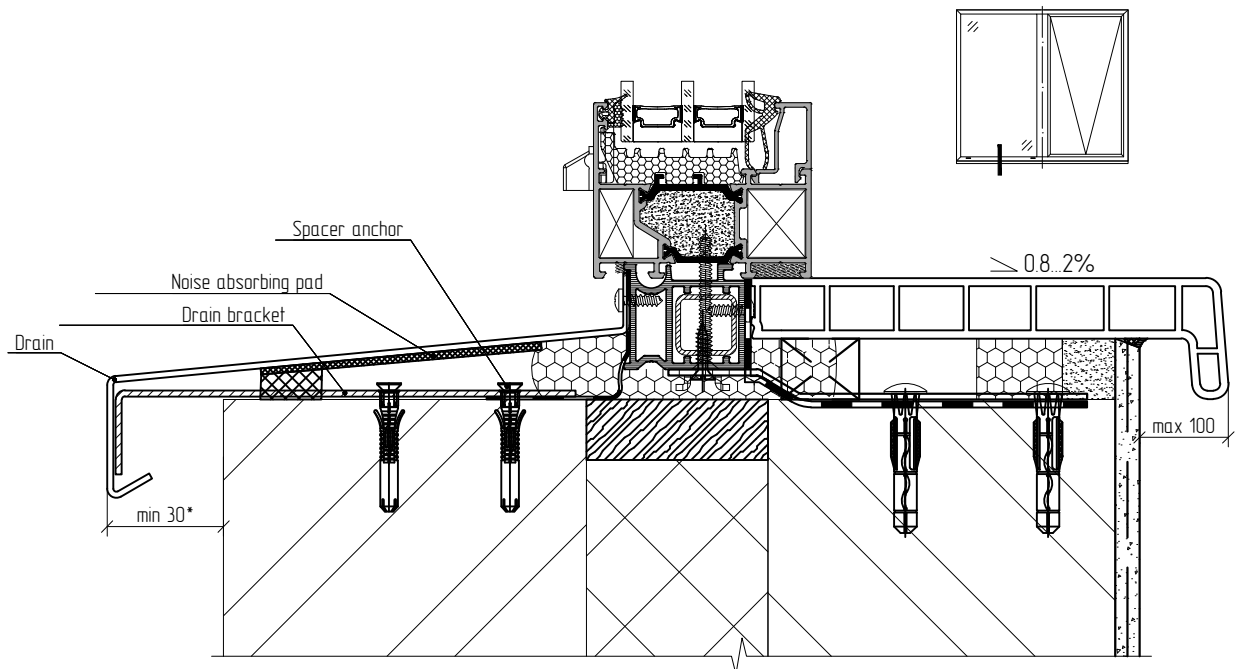
If the drain is wider than 150 mm and the window opening is wider than 900 mm, the drain is additionally fastened to metal brackets and the brackets are fastened to the bottom of the window opening with spacer plugs.
Drain overlap on the façade is in accordance with the region of construction (from 50 to 70 mm, for the Republic of Belarus)
Sand cement screed or foam insulation is applied to the surface of the opening under the drain.

ALT W72 CW / W73 CW System installation

Installation of the window in the opening without a rebate with the use of mounting plates for W72CW



Bottom fastening joint to openings



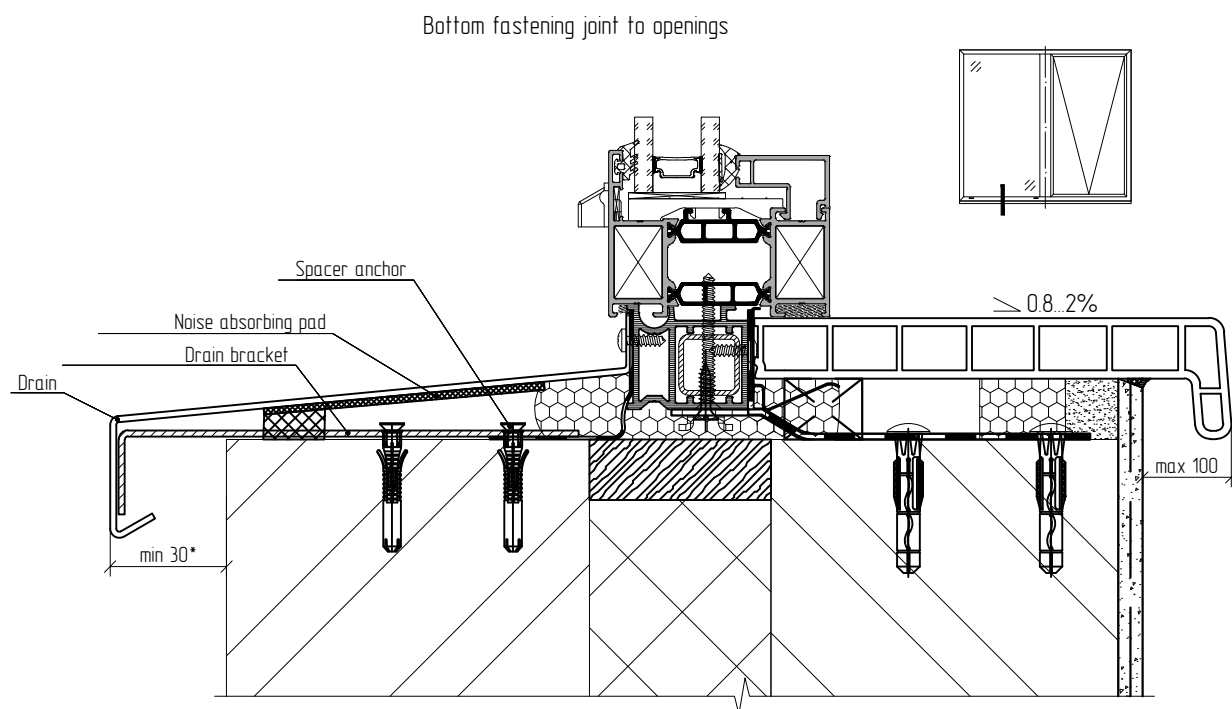
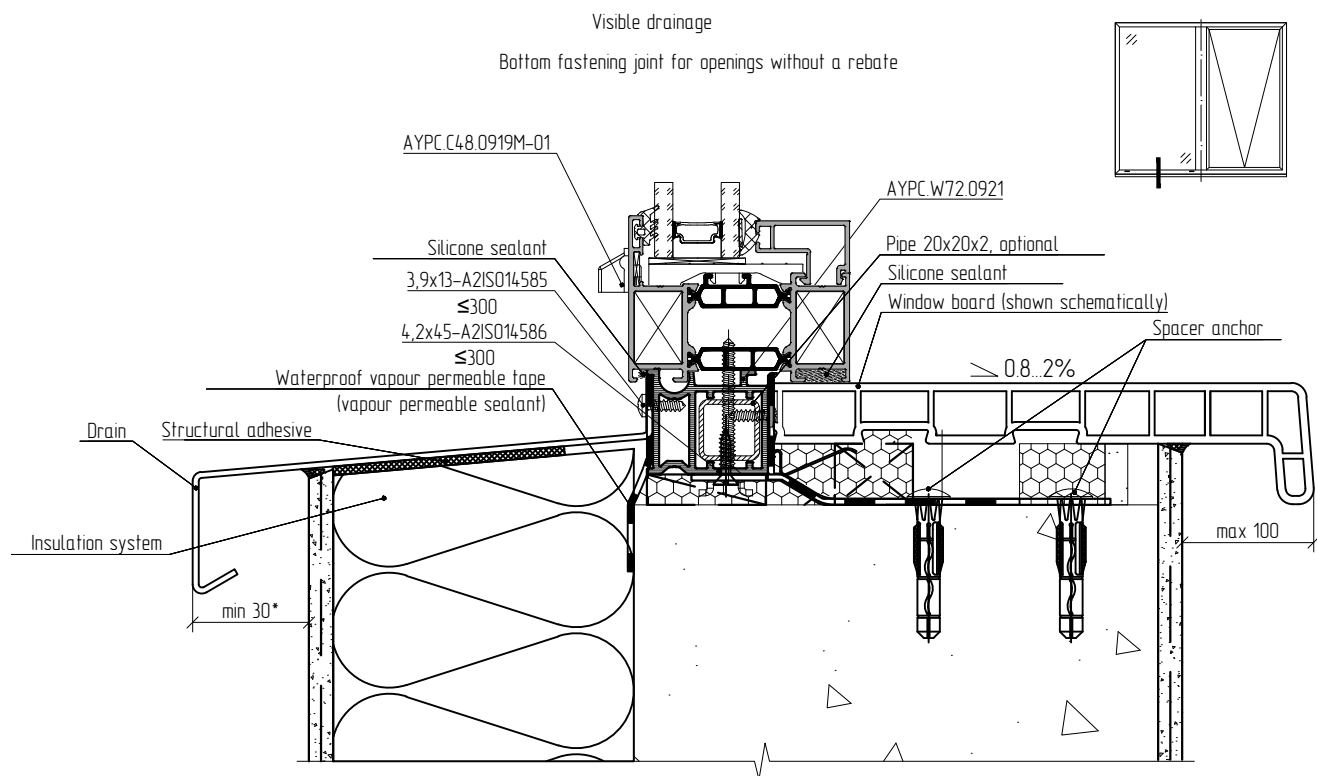
If the drain is wider than 150 mm and the window opening is wider than 900 mm, the drain is additionally fastened to metal brackets and the brackets are fastened to the bottom of the window opening with spacer plugs.

Drain overlap on the façade is in accordance with the region of construction (from 50 to 70 mm, for the Republic of Belarus)

Sand cement screed or foam insulation is applied to the surface of the opening under the drain.

ALT W72 CW / W73 CW System installation

Installation of the window in the opening without a rebate with the use of mounting plates for W73CW



If the drain is wider than 150 mm and the window opening is wider than 900 mm, the drain is additionally fastened to metal brackets and the brackets are fastened to the bottom of the window opening with spacer plugs.

Drain overlap on the façade is in accordance with the region of construction (from 50 to 70 mm, for the Republic of Belarus)

Sand cement screed or foam insulation is applied to the surface of the opening under the drain.

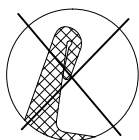
ALT W72 CW / W73 CW System installation

5

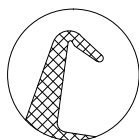
Inspection of gaskets

Check all the gaskets for damage, sticking or crumbling

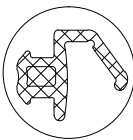
- gasket perimeter;
- gasket junctions.



Central gasket



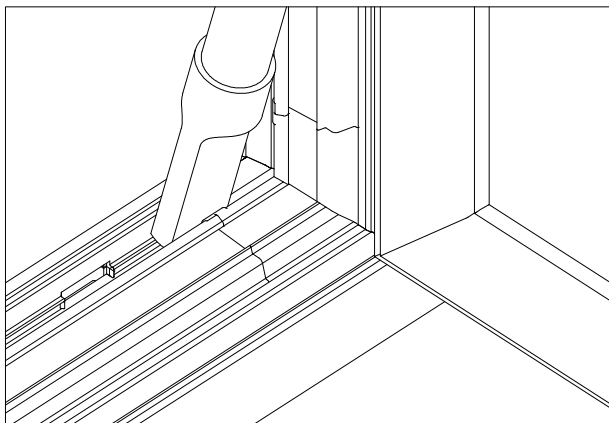
Ledge gasket



6

Cleaning of the product

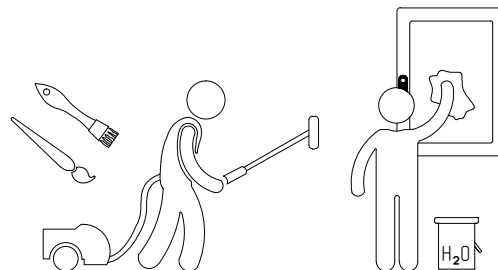
1. Inspect window components for any obstructions or soiling: construction materials, dust, etc.
2. Clean spouts, drainage holes, grooves and hardware elements with a vacuum cleaner or soft cloth and diluted neutral pH detergent.



To maintain surface quality of the hardware elements over time and to prevent wearing due to corrosion, observe the following recommendations:

- Do not use corrosive cleaners, solvents or detergents such as synthetic solvents, acetone or nitro solvents. Use neutral soap and water.

- Do not use rigid abrasive materials such as scrapers, metal brushes, rough sponges, etc. Use plastic or wooden scrapers, soft rags, brushes or a vacuum cleaner.



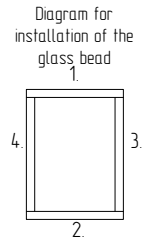
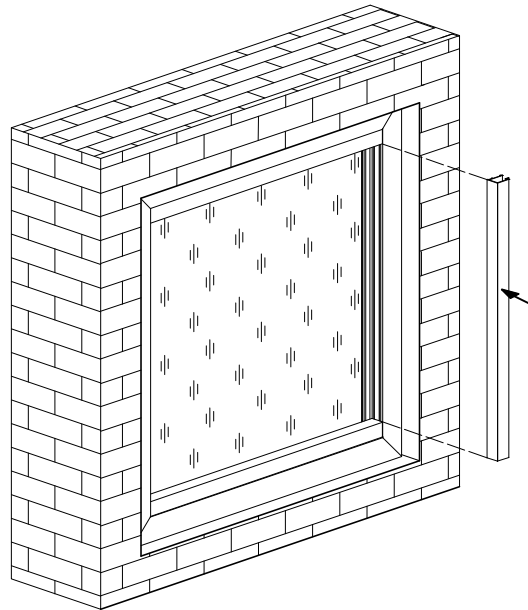
Recommended care kit - Cleaning&Care kit by Weiss.
(not supplied via ALUTECH)



ALT W72 CW / W73 CW System installation

7

Installation of the infill



Carry glass units in an upright position, avoiding impacts, resting the glass unit on corners or rigid surfaces.
 Perform glazing with the use of suction pads.
 Install the glass unit in the correct position in accordance with the marking and formula of the glass unit.
 When installing supports and seam sealing, make sure that the supports and seam sealing do not block drainage and ventilation holes.
 Install glass bead in accordance with the marking. See step 2, "Removing the infill", in the mounting instructions



See W72CW/W73CW technical catalogue
 Section "Machining and assembly. Installation of the infill"

Diagram for installation of supports under the infill in the frame and the order of infill wedging

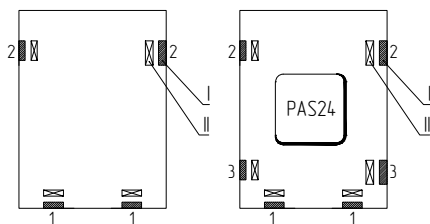
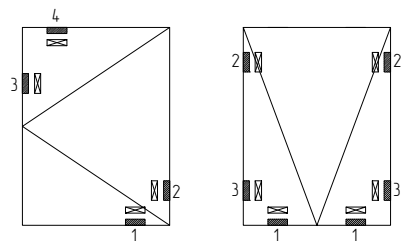
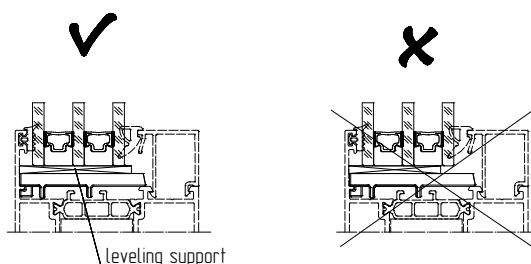


Diagram for installation of supports under the infill in the sash and the order of infill wedging



I. - bearing support;
 II. - leveling support.

When selecting the width of the leveling support, please observe the following recommendations:





alusystems@alutech-group.com
www.alutech-group.com

